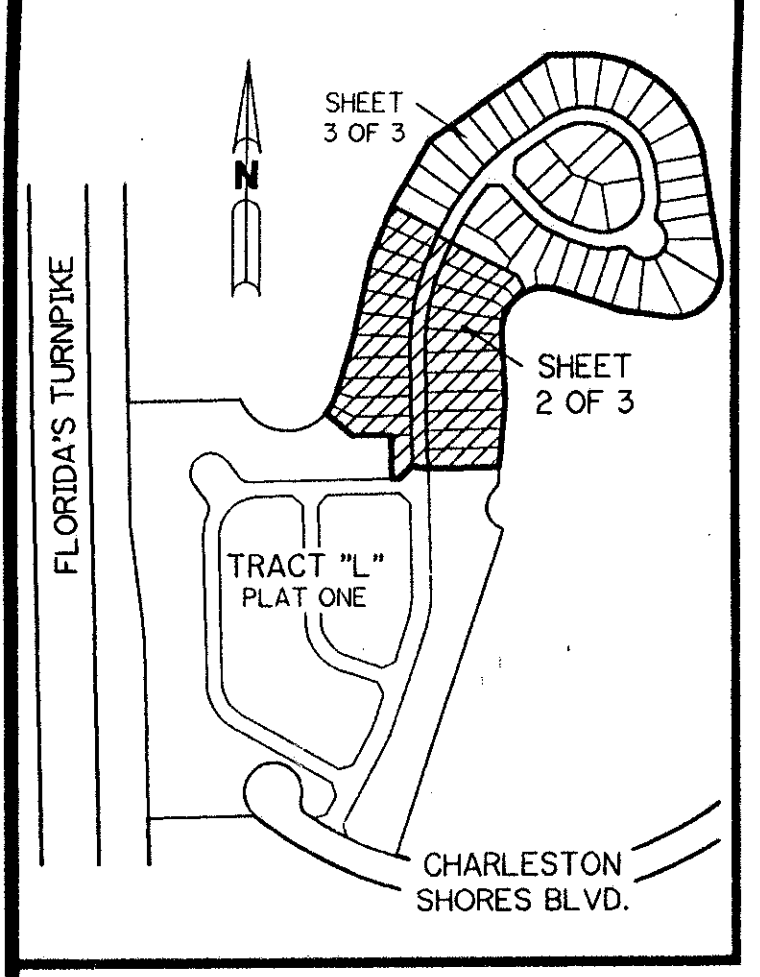


A PART OF LAKE CHARLESTON PLANNED UNIT DEVELOPMENT

LAKE CHARLESTON - TRACT "L" - PLAT TWO

BEING A REPLAT OF A PORTION OF TRACT "L" ACCORDING TO THE PLAT OF LAKE CHARLESTON PLAT NO. 3 - P.U.D. AS RECORDED IN PLAT BOOK 62, PAGES 55 THROUGH 68, INCLUSIVE, OF THE PUBLIC RECORDS OF PALM BEACH COUNTY, FLORIDA. LYING IN SECTION 9, TOWNSHIP 45 SOUTH, RANGE 42 EAST

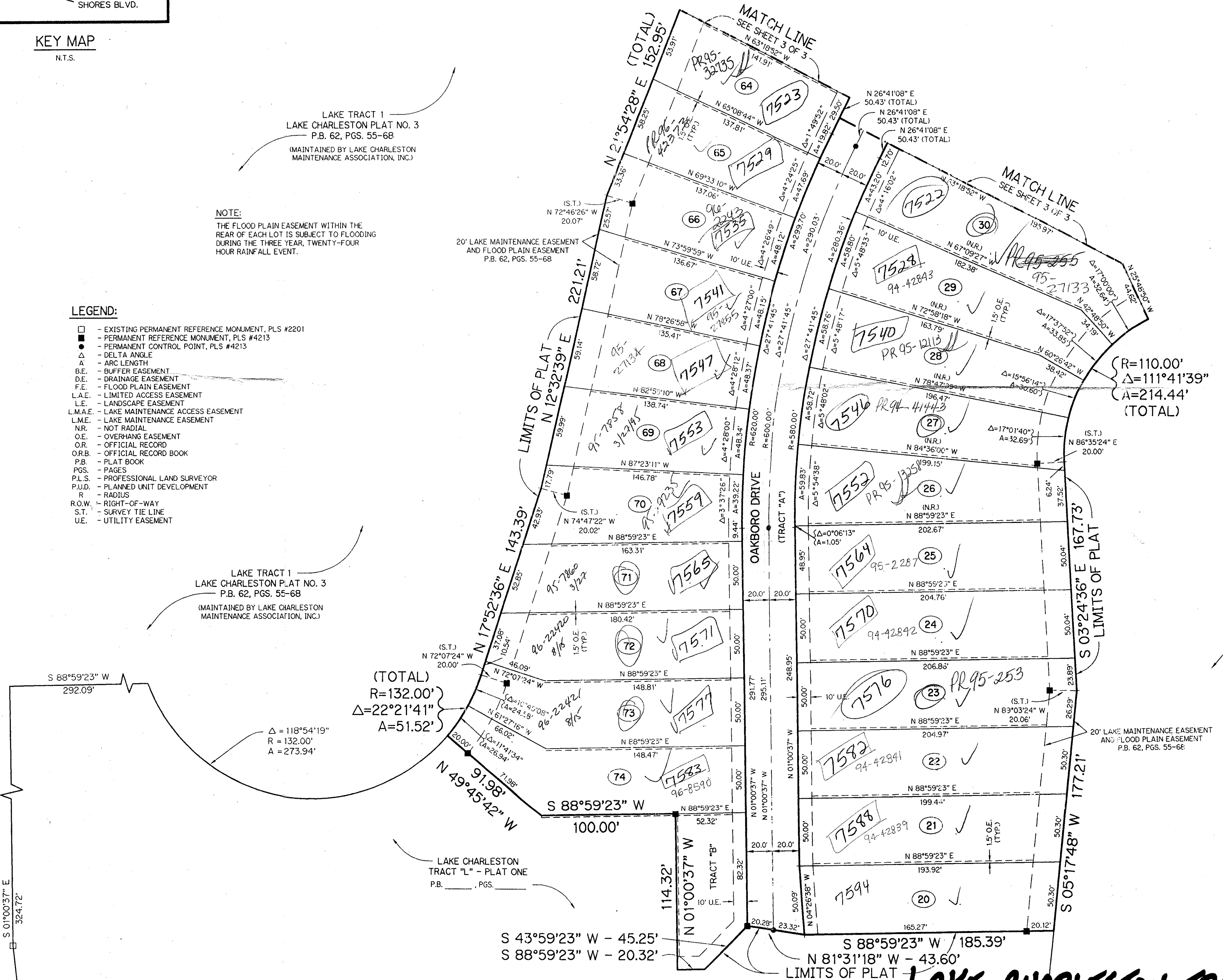
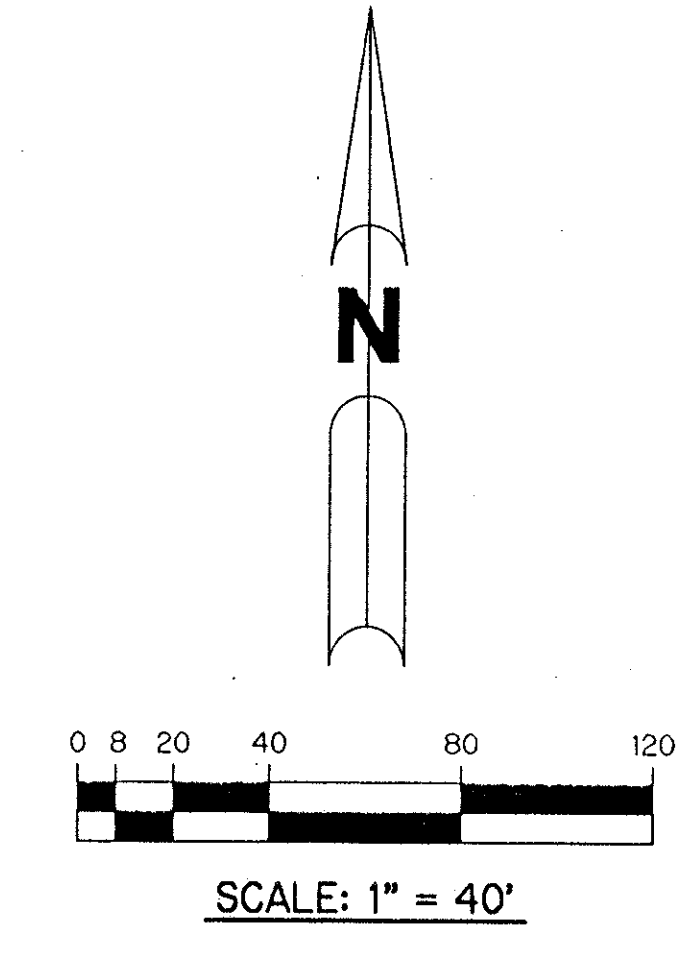
SHEET 2 OF 3 JUNE, 1994



LAKE TRACT 1
LAKE CHARLESTON PLAT NO. 3
P.B. 62, PGS. 55-68
(MAINTAINED BY LAKE CHARLESTON MAINTENANCE ASSOCIATION, INC.)

NOTE:
THE FLOOD PLAIN EASEMENT WITHIN THE REAR OF EACH LOT IS SUBJECT TO FLOODING DURING THE THREE YEAR, TWENTY-FOUR HOUR RAINFALL EVENT.

- LEGEND:
- - EXISTING PERMANENT REFERENCE MONUMENT, PLS #2201
 - - PERMANENT REFERENCE MONUMENT, PLS #4213
 - - PERMANENT CONTROL POINT, PLS #4213
 - Δ - DELTA ANGLE
 - A - ARC LENGTH
 - B.E. - BUFFER EASEMENT
 - D.E. - DRAINAGE EASEMENT
 - F.E. - FLOOD PLAIN EASEMENT
 - L.A.E. - LIMITED ACCESS EASEMENT
 - L.E. - LANDSCAPE EASEMENT
 - L.M.A.E. - LAKE MAINTENANCE ACCESS EASEMENT
 - L.M.E. - LAKE MAINTENANCE EASEMENT
 - N.R. - NOT RADIAL
 - O.E. - OVERHANG EASEMENT
 - O.R. - OFFICIAL RECORD
 - O.R.B. - OFFICIAL RECORD BOOK
 - P.B. - PLAT BOOK
 - PGS. - PAGES
 - P.L.S. - PROFESSIONAL LAND SURVEYOR
 - P.U.D. - PLANNED UNIT DEVELOPMENT
 - R - RADIUS
 - R.O.W. - RIGHT-OF-WAY
 - S.T. - SURVEY TIE LINE
 - U.E. - UTILITY EASEMENT



SUBDIVISION # Lake Charleston
BOOK 73 Tract L Plat 2
PAGE 95
FLOOD PLAIN EASEMENT B
QUAD # 49
SE 94-7072
PUD NAME same
ZIP CODE 33467
TRA-439

PET. 86-96A
AUOC. # 0019 w/ASGMT.
OF CREDIT LETTER
5/2/2/I

LAKE TRACT 1
LAKE CHARLESTON PLAT NO. 3
P.B. 62, PGS. 55-68
(MAINTAINED BY LAKE CHARLESTON MAINTENANCE ASSOCIATION, INC.)

THIS INSTRUMENT PREPARED BY
PERRY C. WHITE P.L.S. 4213 STATE OF FLORIDA
LAWSON, NOBLE AND ASSOCIATES, INC.
ENGINEERS PLANNERS SURVEYORS
WEST PALM BEACH, FLORIDA

0533-027 73/95

LAKE CHARLESTON-TRACT "L"-PLAT TWO